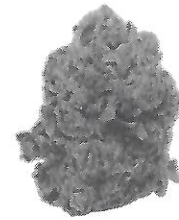


Certificate of Analysis

For R&D use only, Not a California Compliance Certificate

Sample : Gush Mintz

| | | | | | |
|-------------------|-----------------|----------|------------|----------|------------|
| Sample ID | 20251023-7203 | Matrix | Flower | | |
| Tested for | Fresh Daily Bud | Mass | 1g | | |
| Sampled | | Received | 10/21/2025 | Reported | 10/23/2025 |
| Analyses executed | CAN+ | | | | |



| | |
|------------------------------------|---------|
| Cannabidiol / CBD | 0.177% |
| D-9 Tetrahydrocannabinol / THC | 0.224% |
| Tetrahydrocannabinolic Acid / THCa | 21.935% |
| Total THC* | 19.307% |

Cannabinoids Analysis

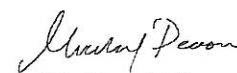
Instrument HPLC VWD | Method SOP 001 HPLC Hemp by UV Detection
The expanded Uncertainty of the Cannabinoid analysis is approximately $\pm 7.80\%$ at the 95% Confidence Level

| Analyte | LOD/LOQ (mg/g) | Result (%) | Result (mg/g) |
|---|----------------|------------|---------------|
| Cannabidiarin CBDV | 0.002 / 0.012 | 0.013% | 0.13 |
| Cannabidiolic Acid CBDA | 0.001 / 0.026 | 0.066% | 0.66 |
| Cannabigerol Acid CBGa | 0.002 / 0.007 | ND | ND |
| Cannabidiol CBD | 0.004 / 0.011 | 0.177% | 1.77 |
| Cannabigerol CBG | 0.002 / 0.006 | 0.001% | 0.01 |
| Tetrahydrocannabinarin THCV | 0.002 / 0.012 | ND | ND |
| Cannabinol CBN | 0.001 / 0.007 | 0.005% | 0.05 |
| Tetrahydrocannabinol Δ^9 -THC | 0.002 / 0.014 | 0.224% | 2.24 |
| Delta 8 Tetrahydrocannabinol Δ^8 -THC | 0.01 / 0.02 | 0.000% | 0 |
| Cannabicyol CBL | 0.003 / 0.010 | ND | ND |
| Cannabichromene CBC | 0.003 / 0.010 | 0.004% | 0.04 |
| Tetrahydrocannabinolic Acid THCa | 0.001 / 0.005 | 21.935% | 219.35 |
| Total THC (0.87* THCa + D9 THC) | | 19.307% | 193.0745 |
| Total THC (0.87* THCa + D9 THC) + Δ^8 -THC | | | 193.0745 |
| Total CBD (0.877* CBDA + CBD) | | | 2.34882 |
| Total CBG (0.877* CBGa + CBG) | | | 0.01 |
| Total Cannabinoids Analyzed | | 19.543% | 195.43332 |

UI Unidentified
ND Not Detected
N/A Not Applicable
NT Not Reported
LOD Limit of Detection
LOQ Limit of Quantification
<LOQ Detected
>ULCL Above upper limit of linearity
CFU/g Colony Forming Units per 1 gram
TNTC Too Numerous to Count



Authorized Signature


Michael Pearson, Lab Manager

GS Agricultural Safety Compliance Lab | GSComplacelab.com | 805.332.1344 | ISO/IEC 17025:2017

*This report shall not be reproduced except in full, without the written approval of the lab. This report is for informational purposes only and should not be used to diagnose, treat or prevent any disease. Results are only for samples and batches indicated. Results are reported on an "as received" basis, unless indicated otherwise. When a Pass/Fail status is reported, that status is intended to be in accordance with federal, state and local laws which are required for the customer to be in compliance. The measurement of uncertainty is not included in the Pass/Fail evaluation unless explicitly required by federal, state or local laws and has been reported on the certificate of analysis. Measurement of uncertainty is available upon request.